

**NOTES**

1. All work shown on these plans shall be done in conformity with the City of San Bernardino Specifications for Street Construction, 1931, and the Standard Specifications of the California State Highway Department, 1931, and the Standard Specifications of the California State Highway Department, 1931, and the Standard Specifications of the California State Highway Department, 1931.

2. The utility lines shown on these plans are shown in accordance with the records of the City of San Bernardino and the records of the California State Highway Department.

3. The utility lines shown on these plans are shown in accordance with the records of the City of San Bernardino and the records of the California State Highway Department.

4. The utility lines shown on these plans are shown in accordance with the records of the City of San Bernardino and the records of the California State Highway Department.

5. The utility lines shown on these plans are shown in accordance with the records of the City of San Bernardino and the records of the California State Highway Department.

**CITY OF SAN BERNARDINO**

DEPARTMENT OF ENGINEERING  
 STREET IMPROVEMENT PLANS -  
 WATERMAN AVENUE & NINTH STREET  
 Ninth St. Sta. 0+00 to Sta. 4+16.60 East  
 Waterman Ave Sta. 1+00 to Sta. 2+27.25 South

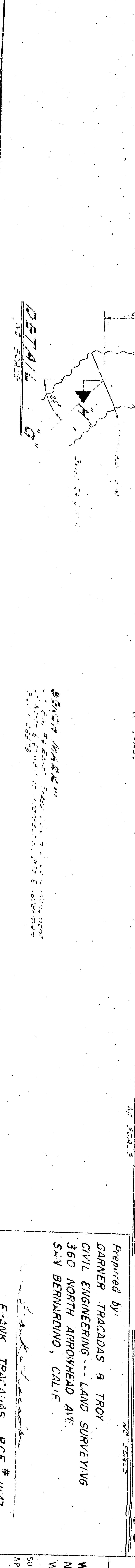
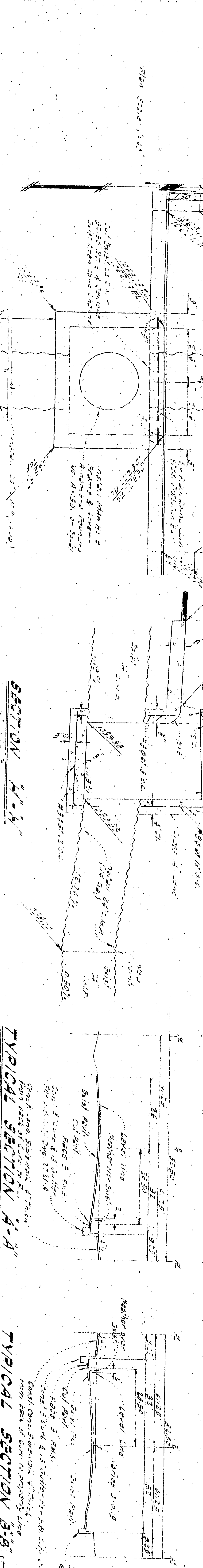
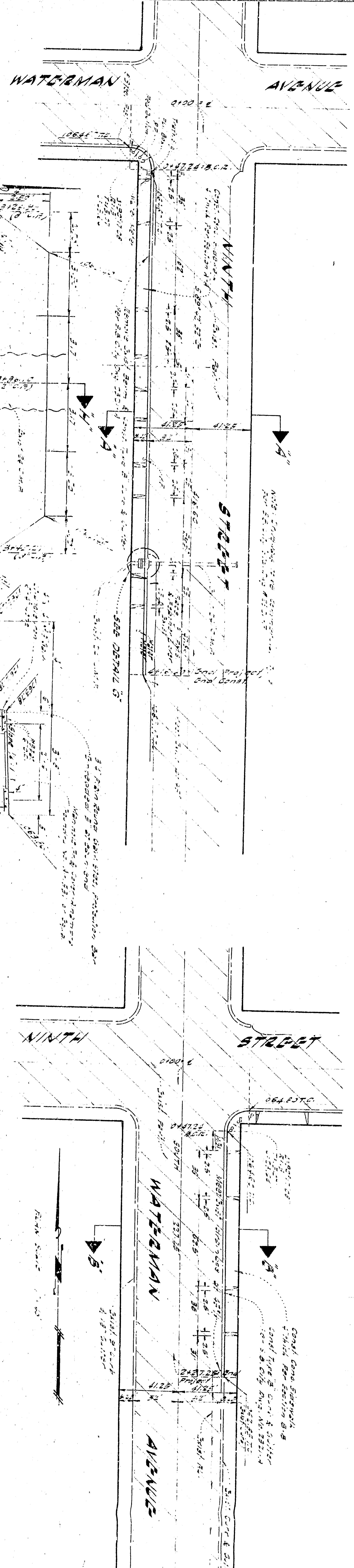
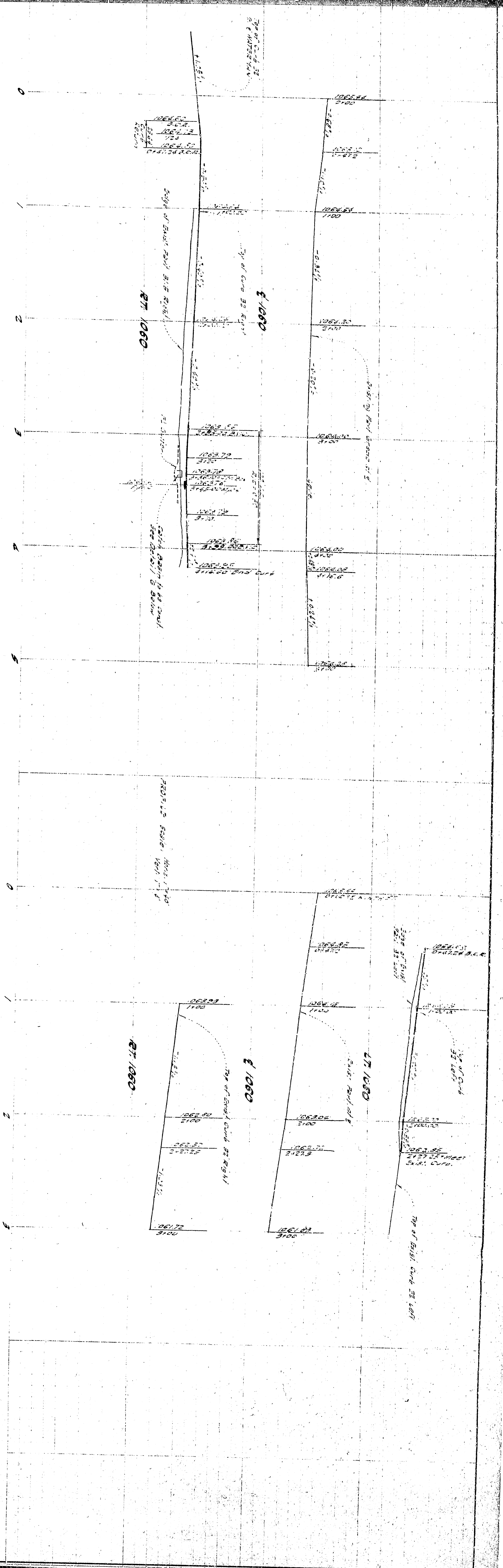
Prepared by:  
 GARNER TRACEDAS & TROY  
 CIVIL ENGINEERING - LAND SURVEYING  
 360 NORTH ARROWHEAD AVE.  
 S.W. BERMUNDO, CALIF.

Submitted by:  
 F. ALIX TRACEDAS RCE # 11447

APPROVED: [Signature]  
 REGISTERED CIVIL ENGINEER NO. 26551

DRAWING NO. 30882  
 SHEET 1 OF 2 SHEETS





**NOTES**

1. All work shown on these plans shall be done in conformity with the City of San Bernardino Specifications for Street Construction, 1931, and the Standard Specifications of the California State Highway Department, 1931, and the Standard Specifications of the California State Highway Department, 1931, and the Standard Specifications of the California State Highway Department, 1931.

2. The utility lines shown on these plans are shown for information only and are not to be construed as a guarantee of their location or depth. The utility lines shown on these plans are shown for information only and are not to be construed as a guarantee of their location or depth.

3. The utility lines shown on these plans are shown for information only and are not to be construed as a guarantee of their location or depth. The utility lines shown on these plans are shown for information only and are not to be construed as a guarantee of their location or depth.

**CITY OF SAN BERNARDINO**

DEPARTMENT OF ENGINEERING  
 STREET IMPROVEMENT PLANS -  
 WATERMAN AVENUE & NINTH STREET  
 Ninth St. Sta. 0+00 to Sta. 4+16.60 East  
 Waterman Ave Sta. 1+00 to Sta. 2+27.25 South

Prepared by:  
 GARNER TRACEDAS & TROY  
 CIVIL ENGINEERING - LAND SURVEYING  
 360 NORTH ARROWHEAD AVE.  
 S.W. BERMUNGINO, CALIF.

Submitted by:  
 F. ALIX TRACEDAS RCE # 11447

APPROVED BY: [Signature]  
 REGISTERED CIVIL ENGINEER NO. 26551

DRAWING NO. 30882  
 SHEET 1 OF 2 SHEETS